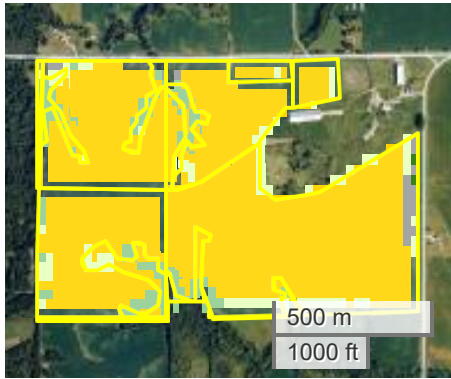




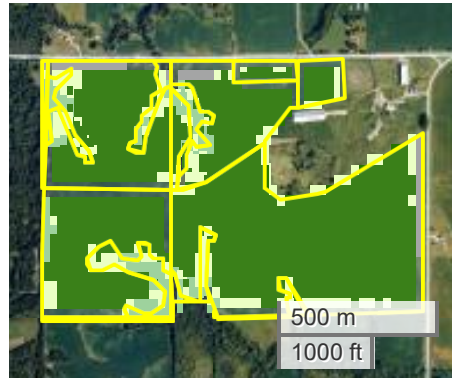
MONROE COUNTY FARM (198.15 AC TOTAL, 195.97 AC TILLABLE)

CROP HISTORY

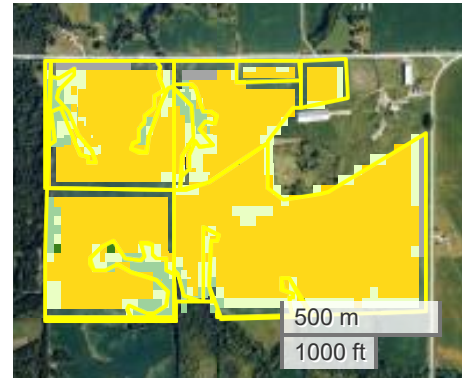
2024



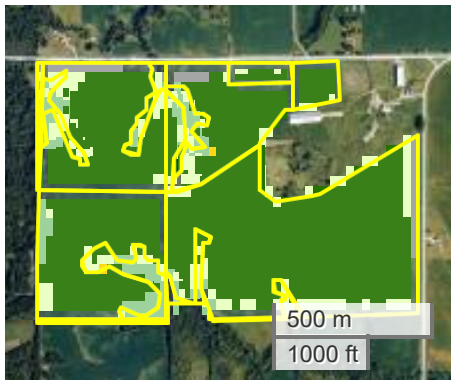
2023



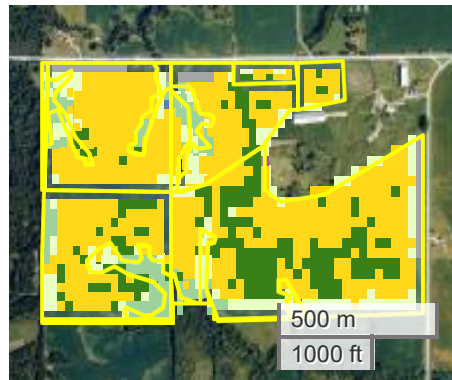
2022



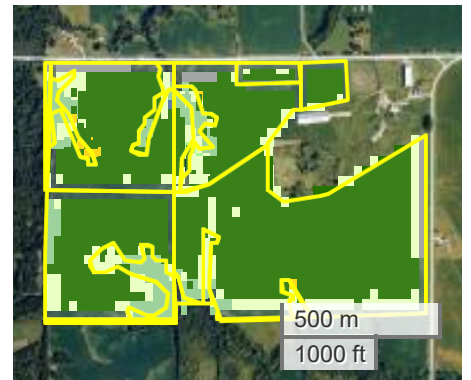
2021



2020



2019



Crop History

	Crop	Percent Area (>0.5%)						
		2024	2023	2022	2021	2020	2019	Average
	Corn	76.7	0.0	66.1	0.2	51.5	0.7	39.1
	Soybeans	0.2	68.5	0.2	69.5	15.2	64.8	36.4
	Grass/Pasture	8.8	17.3	20.0	16.4	17.3	18.2	16.3
	Deciduous Forest	12.6	11.6	11.0	11.4	12.8	12.7	12.0
	Developed/Low Intensity	0.4	1.4	1.4	1.4	1.3	1.3	1.2
	Developed/Open Space	1.3	1.0	1.0	1.0	1.2	1.2	1.1



FarmWorth, LLC makes no warranties, express or implied, regarding the accuracy of any information provided through FarmWorth.com. User is solely responsible for independently verifying all information prior to use and waives any claims against FarmWorth, LLC arising from inaccuracies in such information.